

# THE SWEDISH CATARACT REGISTRY

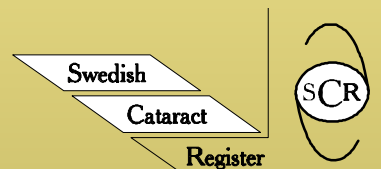
## 1 MILLION SURGERIES FOR CLINICAL IMPROVEMENT

**Mats Lundström**

EyeNet Sweden

Karlskrona, Sweden

[www.cataractreg.com](http://www.cataractreg.com)





# THE SWEDISH QUALITY REGISTRIES

## Content

- Outcome information systems
- Individual patient data on diagnosis, treatment and outcomes

## The initiative

- Every register is started by a curious doctor (or by a medical society)
- This doctor normally becomes the "registry manager"
- Consequently, registers are distributed among clinics throughout Sweden
- The first register started in 1973
- Today there are 70 national quality registries

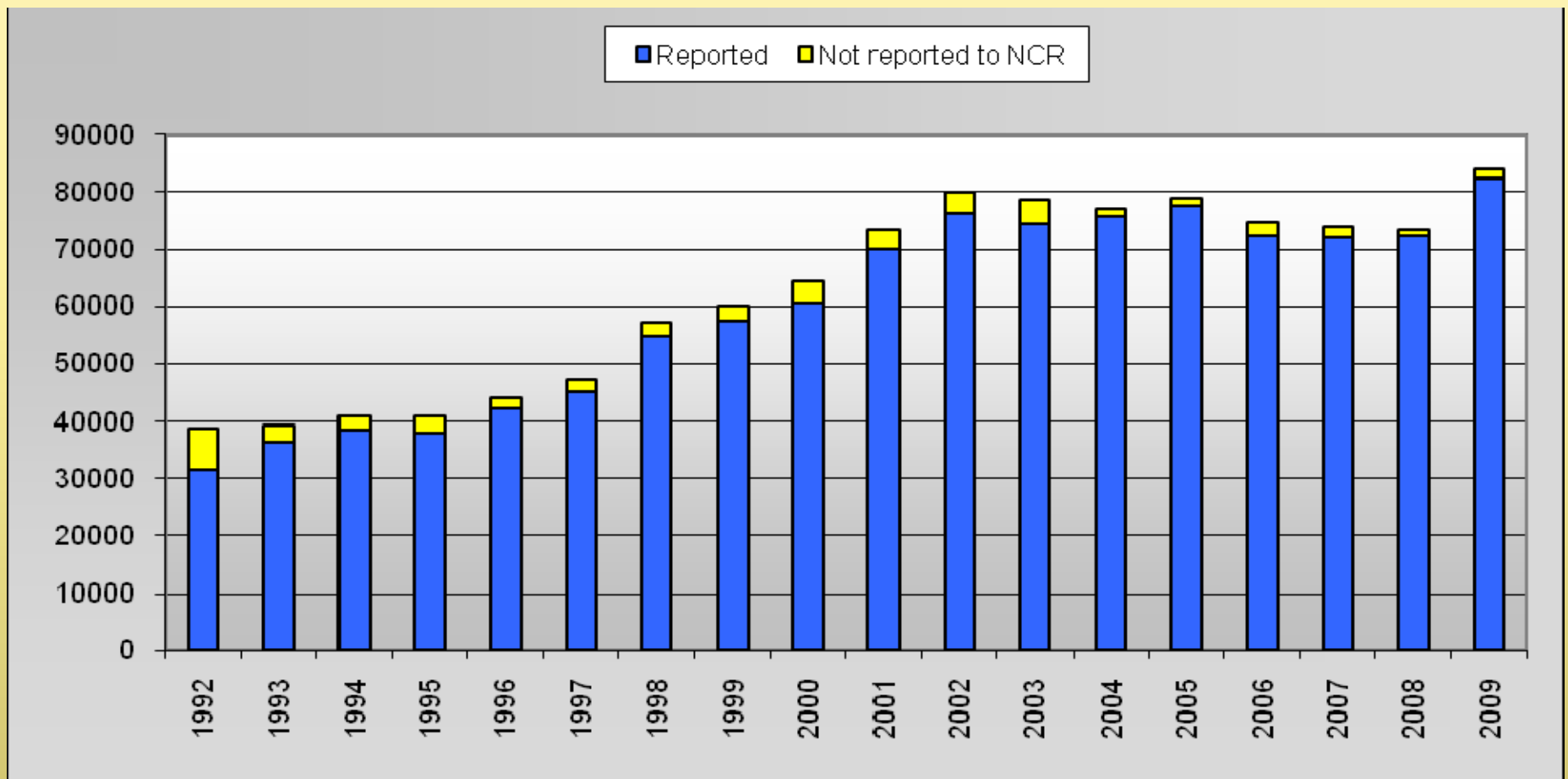
# THE PHILOSOPHY

- Registries are for learning and quality improvement only - not for supervision
- Only the professional groups themselves can build and maintain registries that produce good, valid outcome data
- Patient data can be aggregated and used in different ways and on different levels in the health care system, but usefulness in the clinic is a prerequisite



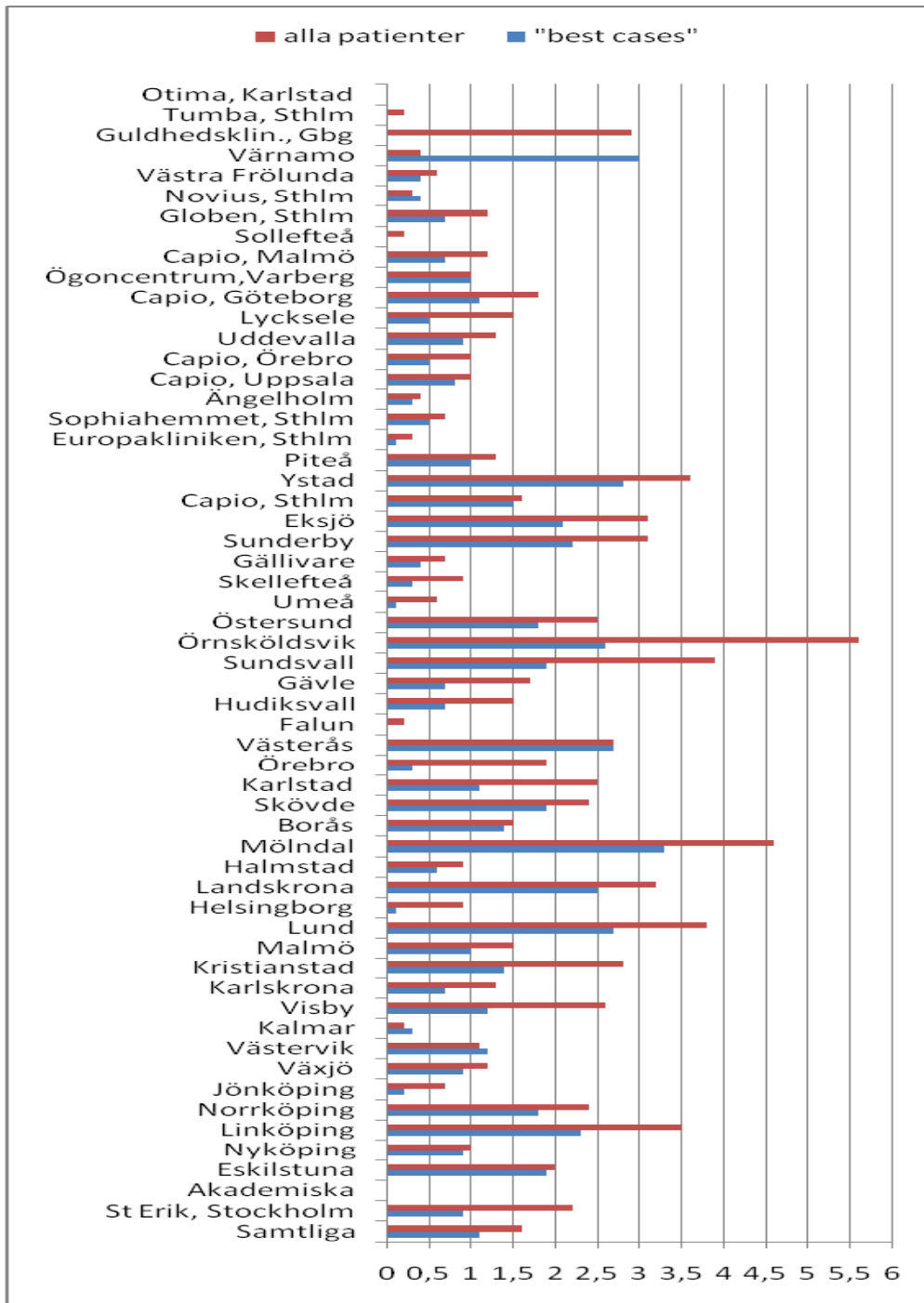
# THE SWEDISH NATIONAL CATARACT REGISTER (NCR)

- Instituted in 1992
- Nationwide coverage: 100% of all clinics, 98.5% of all surgeries in Sweden (2009). Database: 1,079,087 procedures 1 January 2010.
- Steering group: Mats Lundström, Per Montan, Ulf Stenevi, Anders Behndig, Maria Kugelberg.



# HOW CAN A NATIONAL QUALITY REGISTRY CONTRIBUTE TO IMPROVED QUALITY OF CARE?

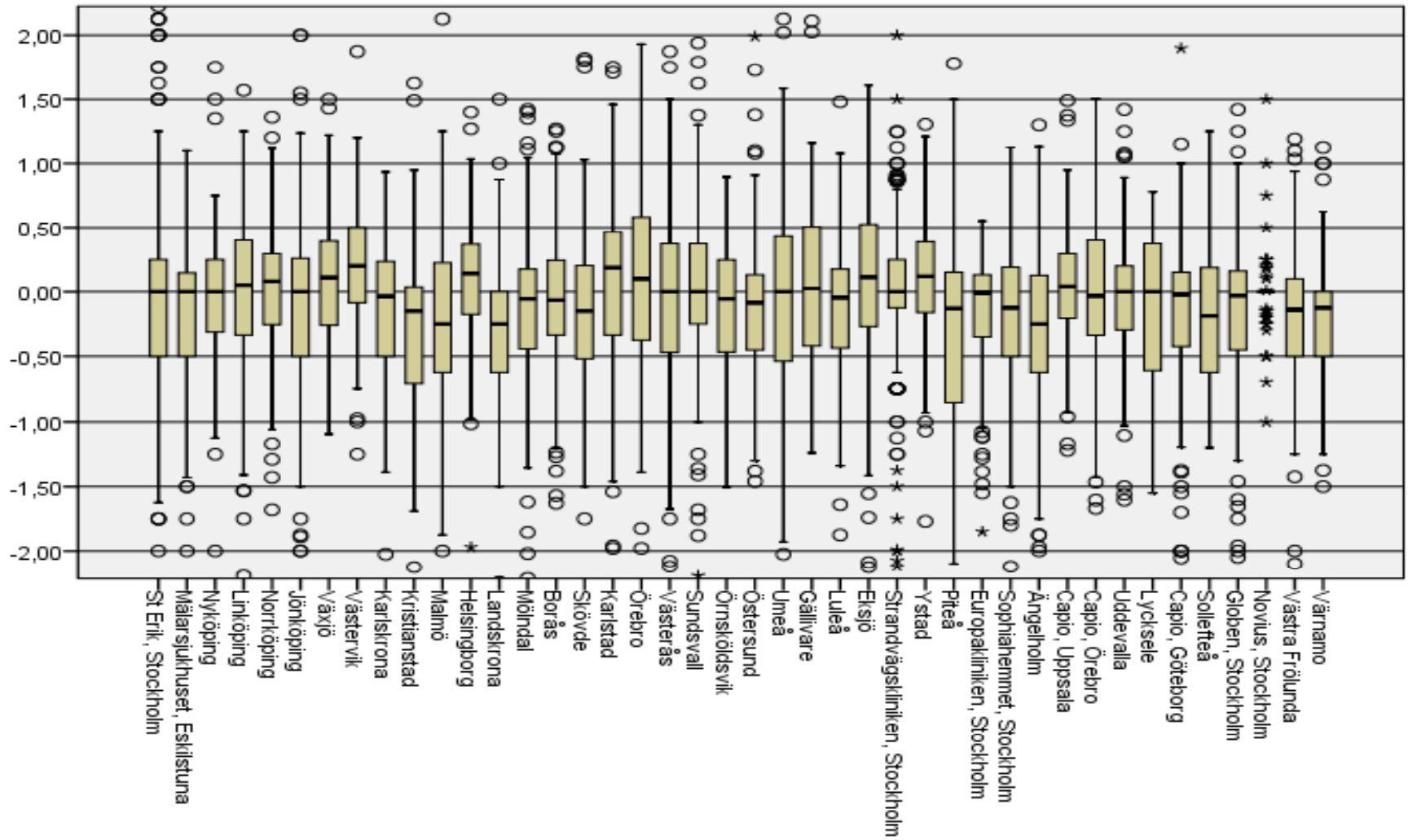
- Providing data for comparison and benchmarking for single surgeons or clinics
- Analyzing rare complications (risks)
- Showing trends for improved technique and improved outcomes



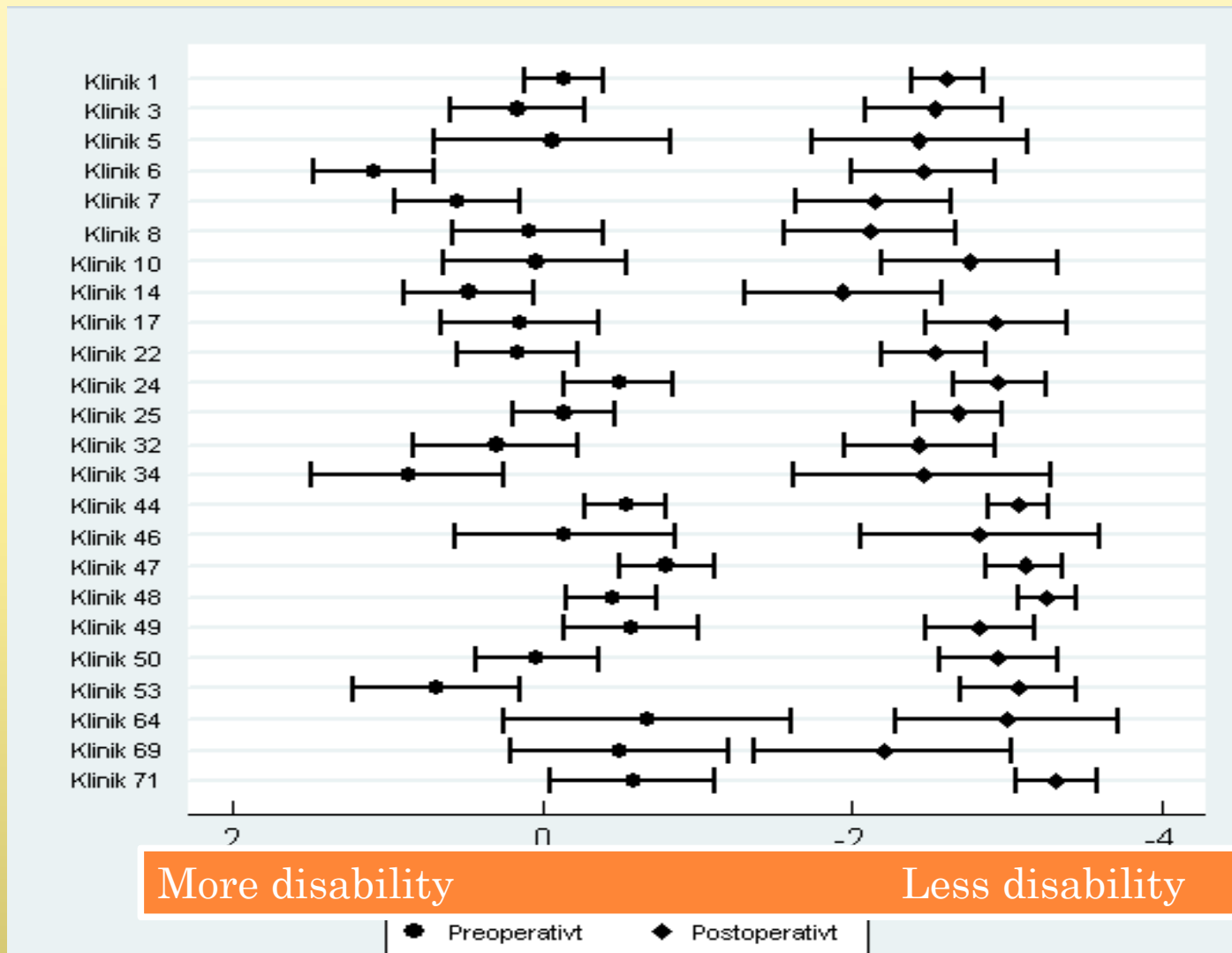
# CAPSULE COMPLICATION DURING SURGERY, IN % ALL PATIENTS (RED) AND BEST CASES (BLUE)

DATA FROM 2009  
CLINICS

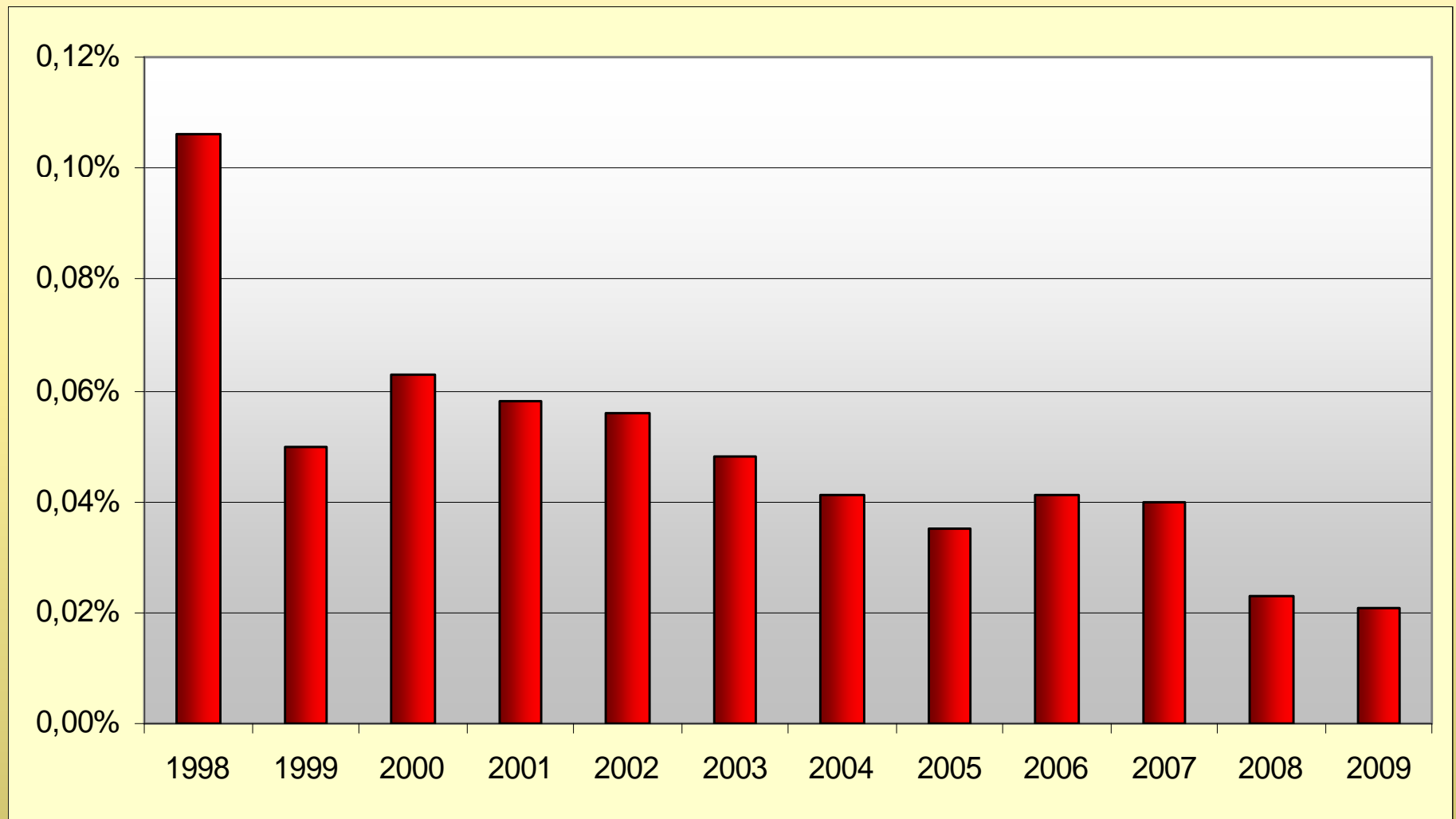
# BIOMETRY PREDICTION ERROR, BOX-PLOT DIAGRAM, CORRECT SIGN CLINICS 2009



# PATIENTS' PERCEIVED DISABILITY BEFORE AND AFTER CATARACT SURGERY AS DEFINED BY CATQUEST-9SF CLINICS 2009

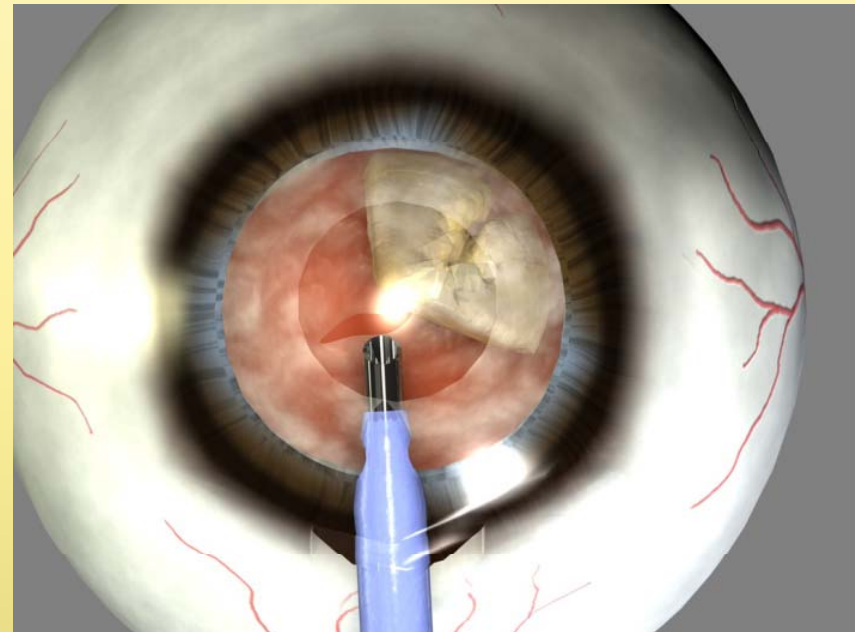


# POSTOPERATIVE ENDOPHTHALMITIS IN SWEDEN 1998-2009



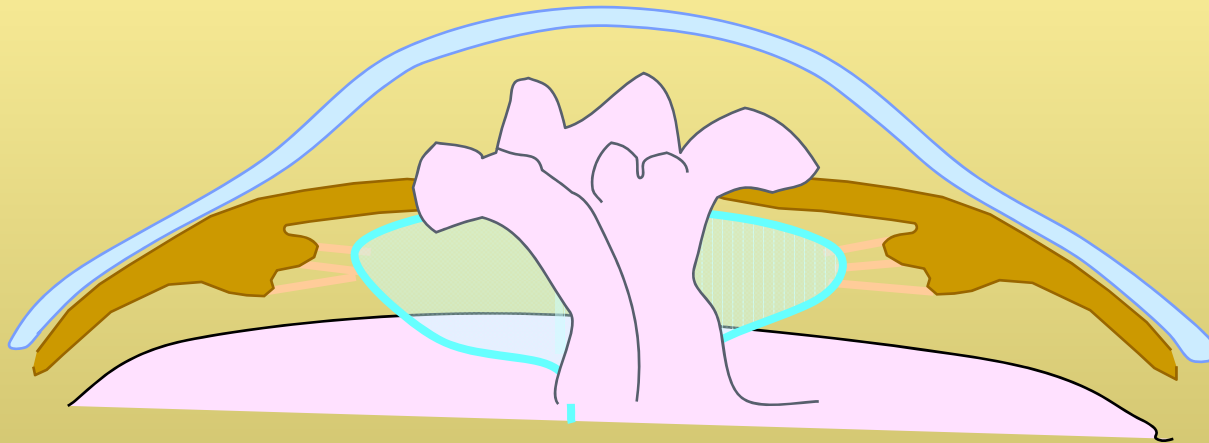
# STUDIES ON CAPSULE COMPLICATION WITHIN THE SWEDISH NATIONAL CATARACT REGISTER

- 1. Database study.
  - Study period: 2002-2009
  - Volume: 602,553 cataract
  - Data from 63 surgical units
- 2. Case-control study.
  - Data from 2003
  - Data from 10 surgical units
  - Follow up 3.5 years after surgery



## CAPSULE COMPLICATION

- A risk factor for postoperative endophthalmitis
- A risk factor for unexpected afakia
- A risk factor for late dislocated IOL
- A risk factor for retinal detachment
- A risk factor for increased patient's self-assessed difficulty after surgery





# EUROPEAN REGISTRY OF QUALITY OUTCOMES FOR CATARACT & REFRACTIVE SURGERY

- Co-funded by European Union under the Public Health Programme & ESCRS
- Starts as a 3-year EU-project and involves 10 European National Societies for Cataract and Refractive Surgery (15 countries)
- 10 Registry Managers appointed for the project implementation in Europe
- Acronym: EUREQUO
- [www.eurequo.org](http://www.eurequo.org)

with the kind contribution of



# Thank you