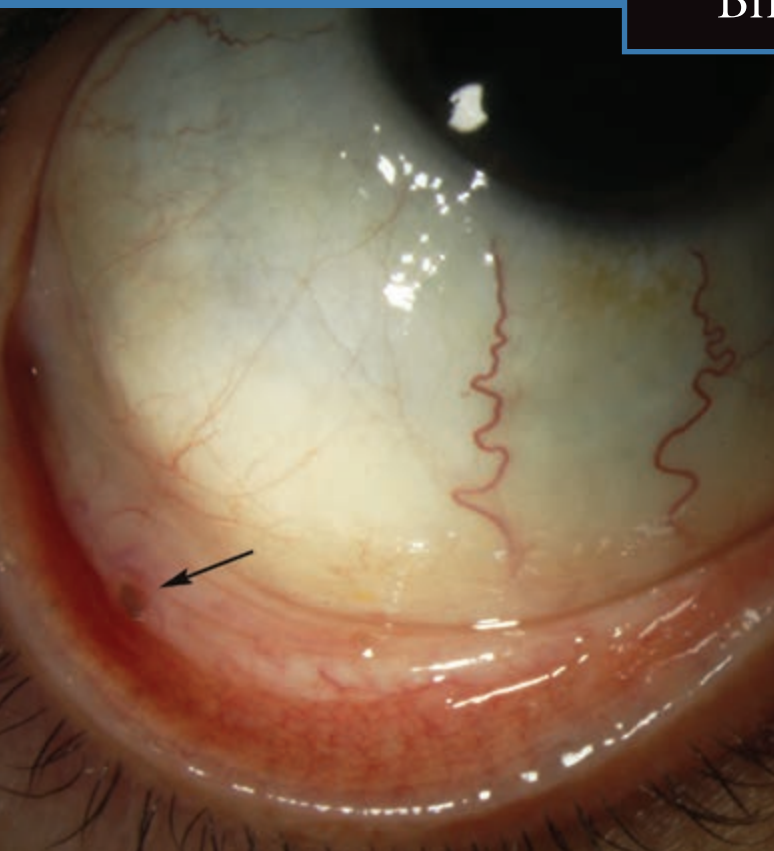


Blink



HILLARY BERNARD, CRA, UNIVERSITY OF MICHIGAN W.K. KELLOGG EYE CENTER, ANN ARBOR.

WHAT IS THIS MONTH'S MYSTERY CONDITION? Join the conversation at www.eyenet.org, where you can post a comment on this image.

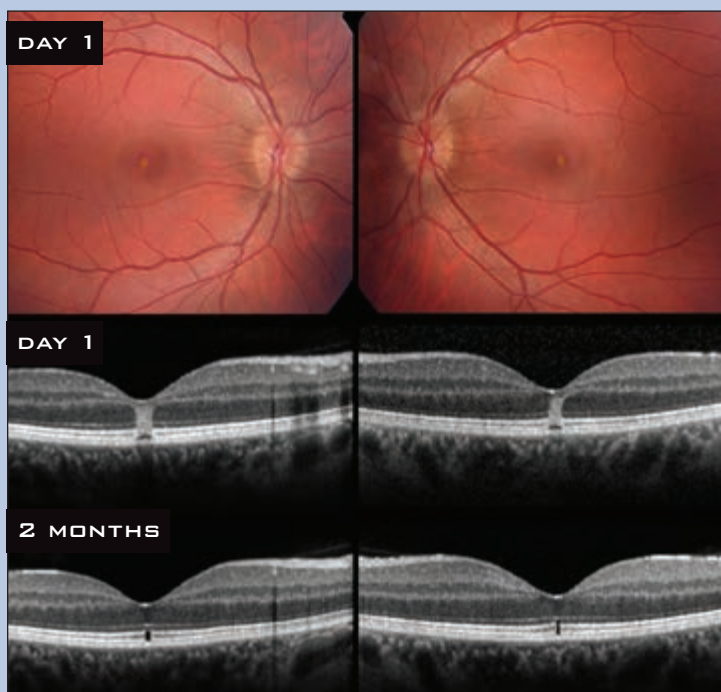
LAST MONTH'S BLINK Solar Retinopathy

A 42-year-old man presented with acute, bilateral vision blurring after staring directly at the sun for several minutes. His visual acuity (VA) was 20/25 in both eyes. A small, yellow, round foveal lesion was identified in both fundi. Amsler grid testing revealed a bilateral central scotoma.

Spectral-domain optical coherence tomography (SD-OCT) showed a full-thickness hyperreflectivity that extended from the inner retinal layers to the retinal pigment epithelium (RPE). It also showed a localized disruption of the ellipsoid portion of the inner segments and RPE. These features are rarely documented and represent a very early stage of solar retinopathy.

No treatment was warranted. At the two-month follow-up the patient's VA was restored to 20/20; however, a focal outer retinal layer disruption persisted on SD-OCT.

Written by Rita Couceiro, MD, Cláudia Loureiro, MD, and Sara Vaz-Pereira, MD, Hospital de Santa Maria, Lisbon, Portugal.



Rita Couceiro, MD, Hospital de Santa Maria, Lisbon, Portugal