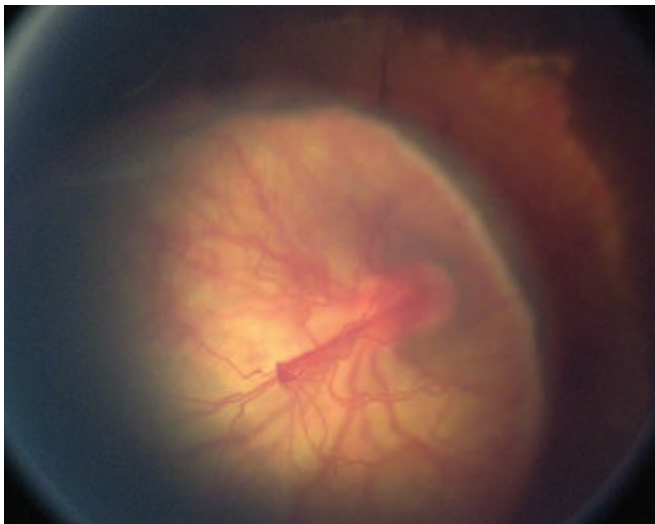


THIS MONTH'S BLINK

# Effects of Fetal Cisplatin Exposure

**D**uring the first and second trimesters of development, a fetus was inadvertently exposed in utero to single-agent chemotherapy when cisplatin was used to treat the mother for tongue cancer. The child was born with several ophthalmic abnormalities, including bilateral microphthalmos. On examination, the child had an axial length of 10 mm in her right eye and 12 mm in the left. The lenses were subluxated in both eyes, with persistent tunica vasculosa lentis. Bilateral fundus abnormalities included persistent posterior fetal vasculature, nasalization of retinal vessels, and choroidal and retinal pigment epithelium malformations. This picture shows a persistent posterior portion of the hyaloid artery through a subluxated lens.



---

WRITTEN BY CRISTINA MOREIRA DOS SANTOS, MD, INÊS COUTINHO, MD, AND SUSANA TEIXEIRA, MD, HOSPITAL PROF. FERNANDO DA FONSECA E.P.E., LISBON, PORTUGAL. PHOTO BY SUSANA TEIXEIRA, MD, HOSPITAL PROF. FERNANDO DA FONSECA E.P.E., LISBON, PORTUGAL.