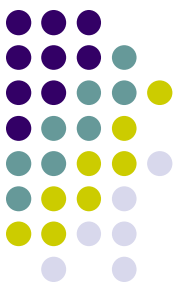
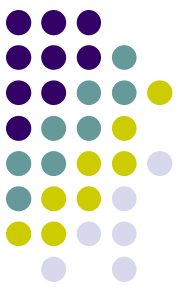


Q

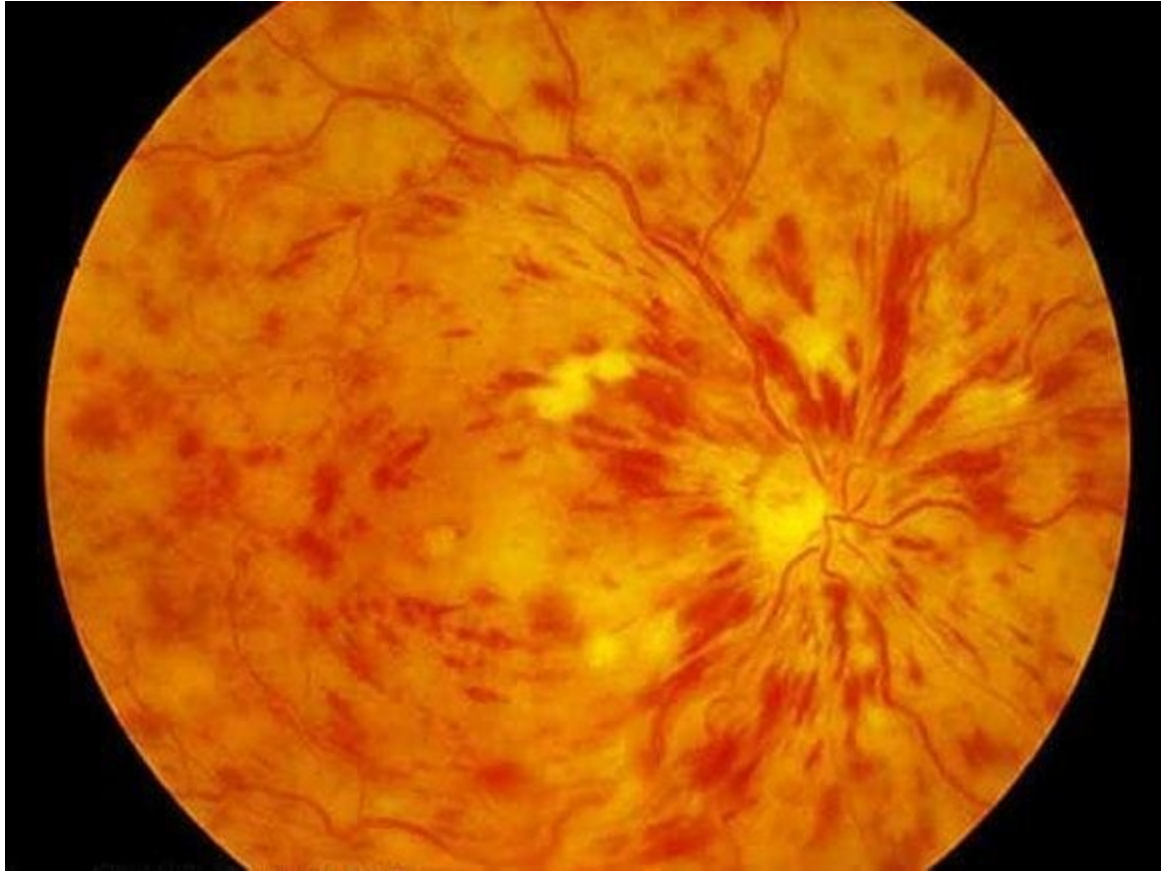
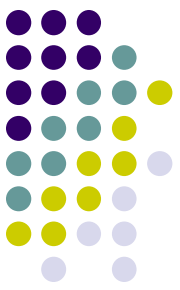
- Identify a condition in which the term ***blood and thunder*** is used to describe the appearance of the retina: ?



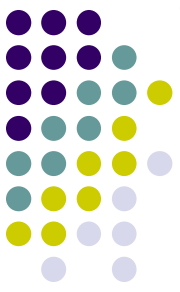


# A

- Identify a condition in which the term ***blood and thunder*** is used to describe the appearance of the retina: **CRVO**



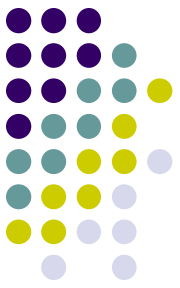
CRVO: Blood and thunder



# Q

- Identify four conditions in which the term *salmon* is commonly employed as a descriptor of ocular disease:
  - 1) ?
  - 2) ?
  - 3) ?
  - 4) ?

# Q/A



- Identify four conditions in which the term *salmon* is commonly employed as a descriptor of ocular disease:

1) Retinal heme in

2) ?

3) ?

4) ?

# A

- Identify four conditions in which the term *salmon* is commonly employed as a descriptor of ocular disease:

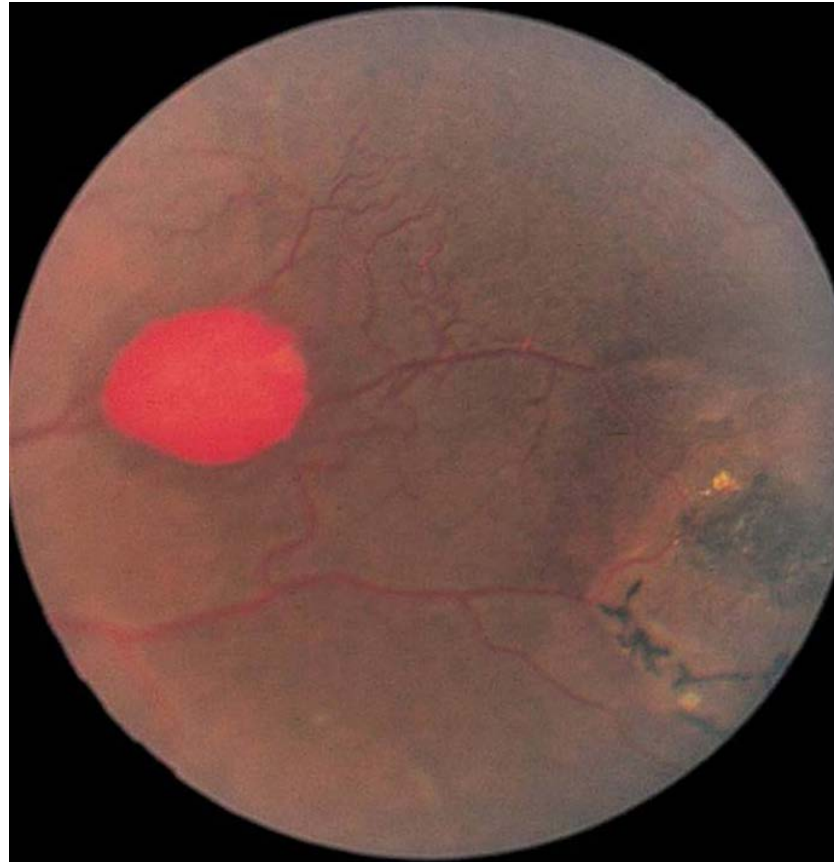
1) Retinal heme in **sickle-cell retinopathy**

2) ?

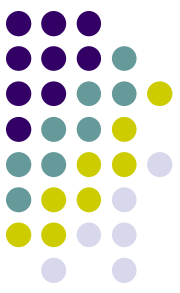
3) ?

4) ?





Sickle-cell retinopathy: Salmon (patch)



# Q

- Identify four conditions in which the term *salmon* is commonly employed as a descriptor of ocular disease:

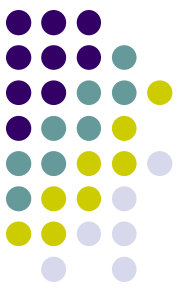
1) Retinal heme in **sickle-cell retinopathy**

2) The vascularized cornea in **two words**  
secondary to **two words**

3) ?

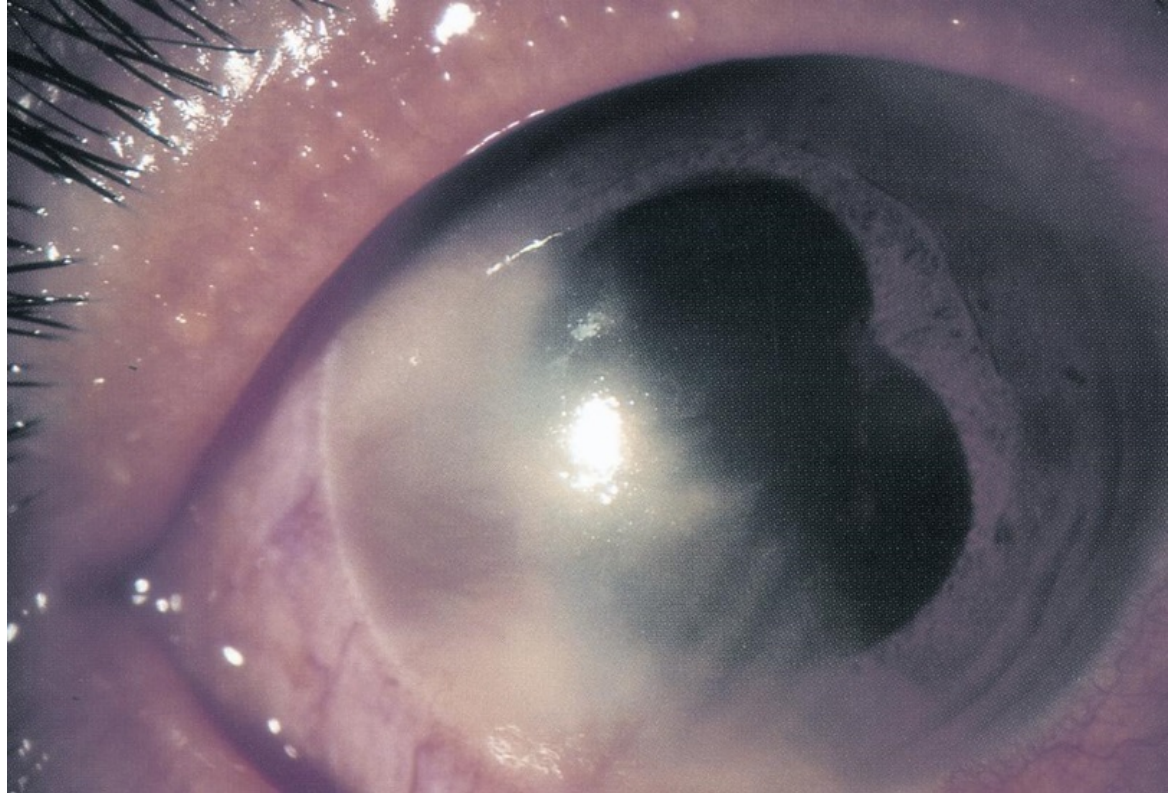
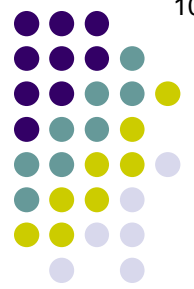
4) ?



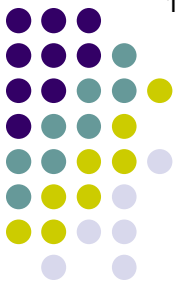


# A

- Identify four conditions in which the term *salmon* is commonly employed as a descriptor of ocular disease:
  - 1) Retinal heme in **sickle-cell retinopathy**
  - 2) The vascularized cornea in **interstitial keratitis** secondary to **luetic disease**
  - 3) ?
  - 4) ?



Congenital syphilis: Salmon patch in IK



# Q

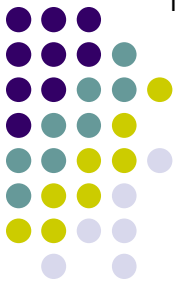
- Identify four conditions in which the term *salmon* is commonly employed as a descriptor of ocular disease:

1) Retinal heme in **sickle-cell retinopathy**

2) The vascularized cornea in **interstitial keratitis**  
secondary to **luetic disease**

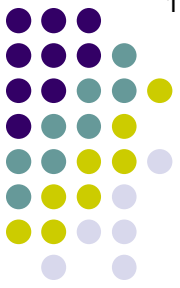
3) Subconj mass in **two words**

4) ?



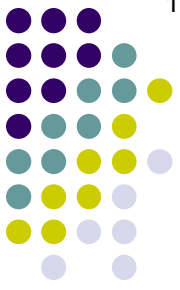
# A

- Identify four conditions in which the term *salmon* is commonly employed as a descriptor of ocular disease:
  - 1) Retinal heme in **sickle-cell retinopathy**
  - 2) The vascularized cornea in **interstitial keratitis** secondary to **luetic disease**
  - 3) Subconj mass in **lymphoma**
  - 4) ?



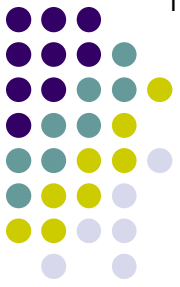
Lymphoma: Subconj salmon patch





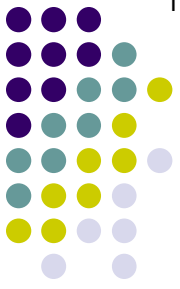
# A

- Identify four conditions in which the term *salmon* is commonly employed as a descriptor of ocular disease:
  - 1) Retinal heme in **sickle-cell retinopathy**
  - 2) The vascularized cornea in **interstitial keratitis** secondary to **luetic disease**
  - 3) Subconj mass in **lymphoma**
  - 4) Subconj **plasmacytoma** in **multiple myeloma**



Multiple myeloma: Plasmacytoma





- Identify four conditions in which the term *salmon* is commonly employed as a descriptor of ocular disease:

1) Retinal heme in **sickle-cell retinopathy**

2) The vascularized cornea in **interstitial keratitis**  
secondary to **luetic disease**

3) Subconj mass in **lymphoma**

4) Subconj **plasmacytoma** in **multiple myeloma**

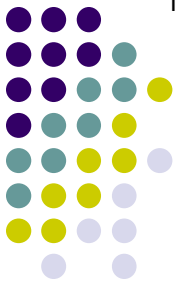
*Yeah, I know, these two are pretty similar...*



# Q

- Identify two conditions in which the term *beaten bronze* is used to describe the appearance of an ocular structure:
  - 1) ?
  - 2) ?

# Q/A

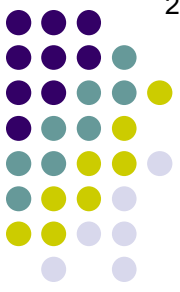


- Identify two conditions in which the term *beaten bronze* is used to describe the appearance of an ocular structure:

1) The corneal endothelium in

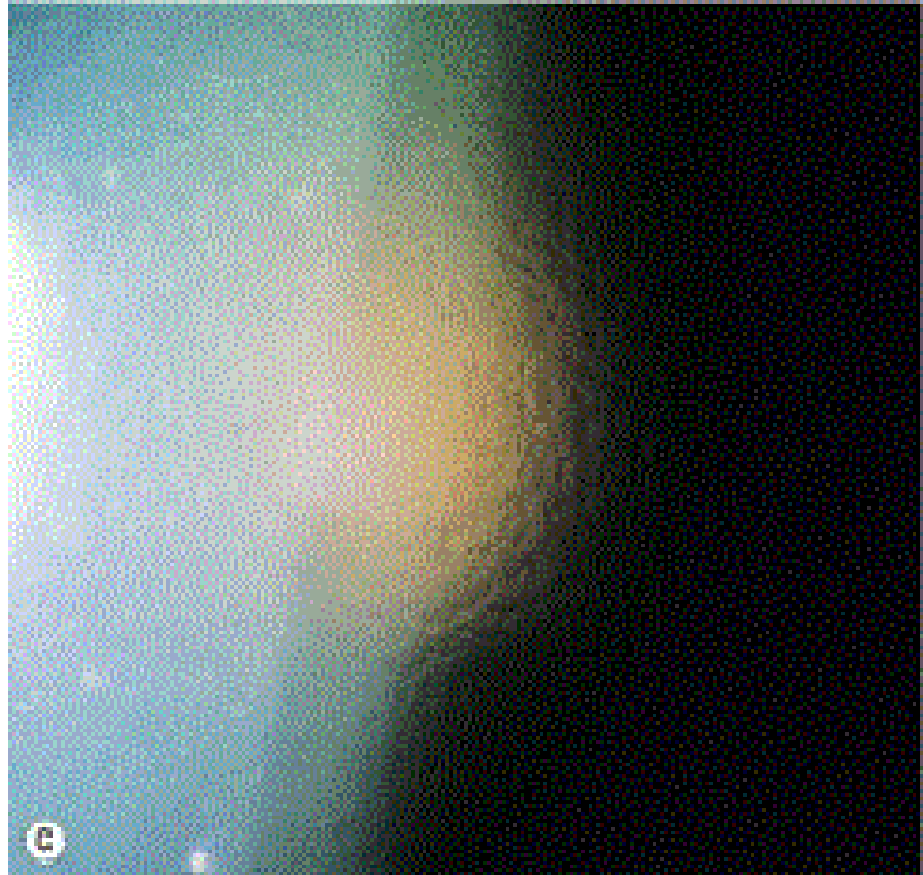
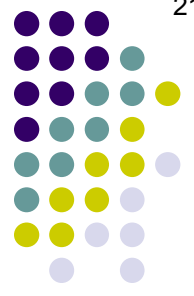
two words

2) ?

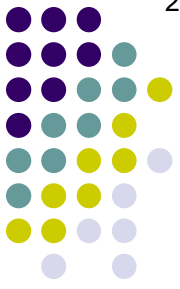


# A

- Identify two conditions in which the term *beaten bronze* is used to describe the appearance of an ocular structure:
  - 1) The corneal endothelium in **Fuchs dystrophy**
  - 2) ?

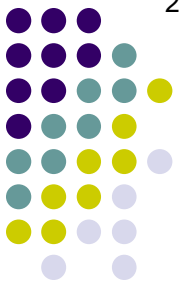


Fuch's dystrophy: Beaten bronze



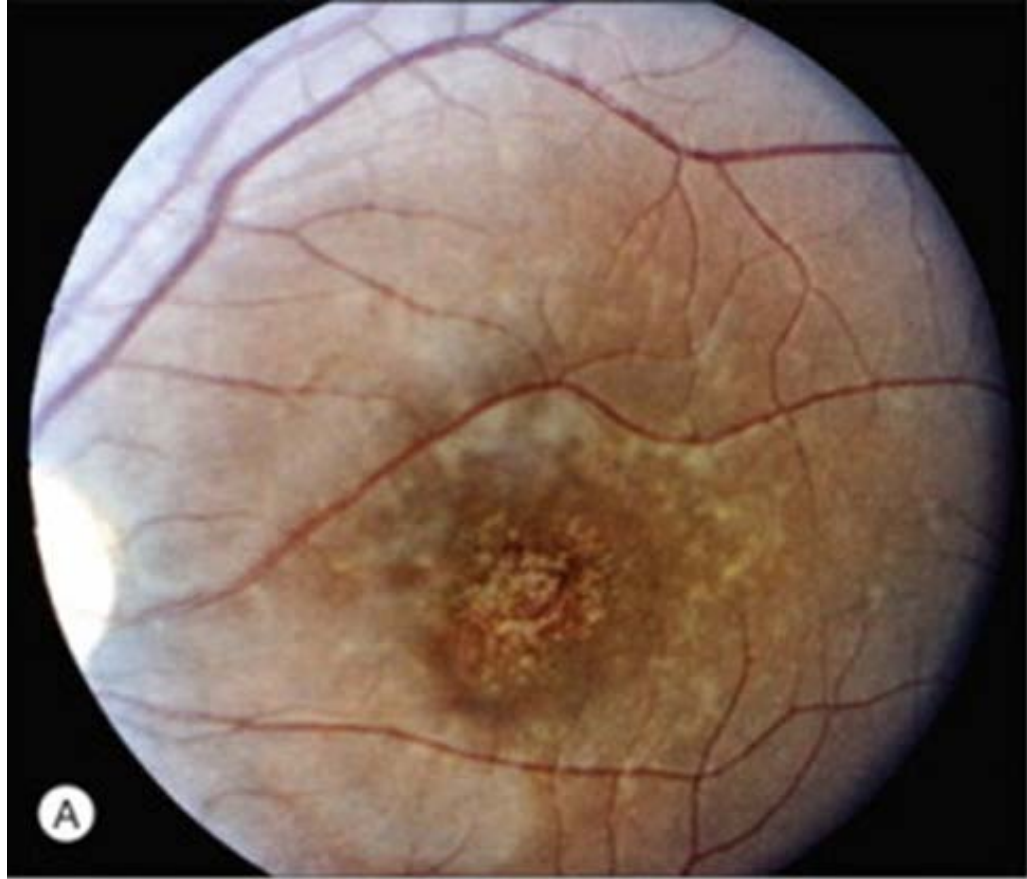
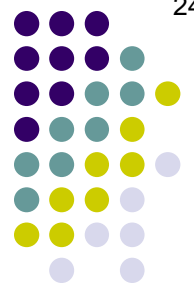
# Q

- Identify two conditions in which the term ***beaten bronze*** is used to describe the appearance of an ocular structure:
  - 1) The corneal endothelium in **Fuchs dystrophy**
  - 2) The macula in



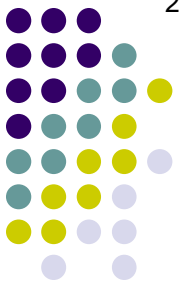
# A

- Identify two conditions in which the term *beaten bronze* is used to describe the appearance of an ocular structure:
  - 1) The corneal endothelium in **Fuchs dystrophy**
  - 2) The macula in **Stargardt disease**



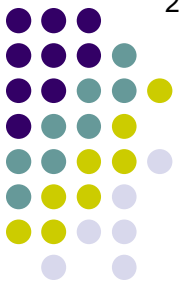
Stargardt's dz: Beaten bronze





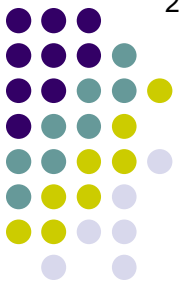
# Q

- Identify two conditions in which the term ***beaten bronze*** is used to describe the appearance of an ocular structure:
  - 1) The corneal endothelium in **Fuchs dystrophy**
  - 2) The macula in **Stargardt disease**
- Identify a condition in which the term ***hammered silver*** is used to describe the appearance of an ocular structure:
  - ?



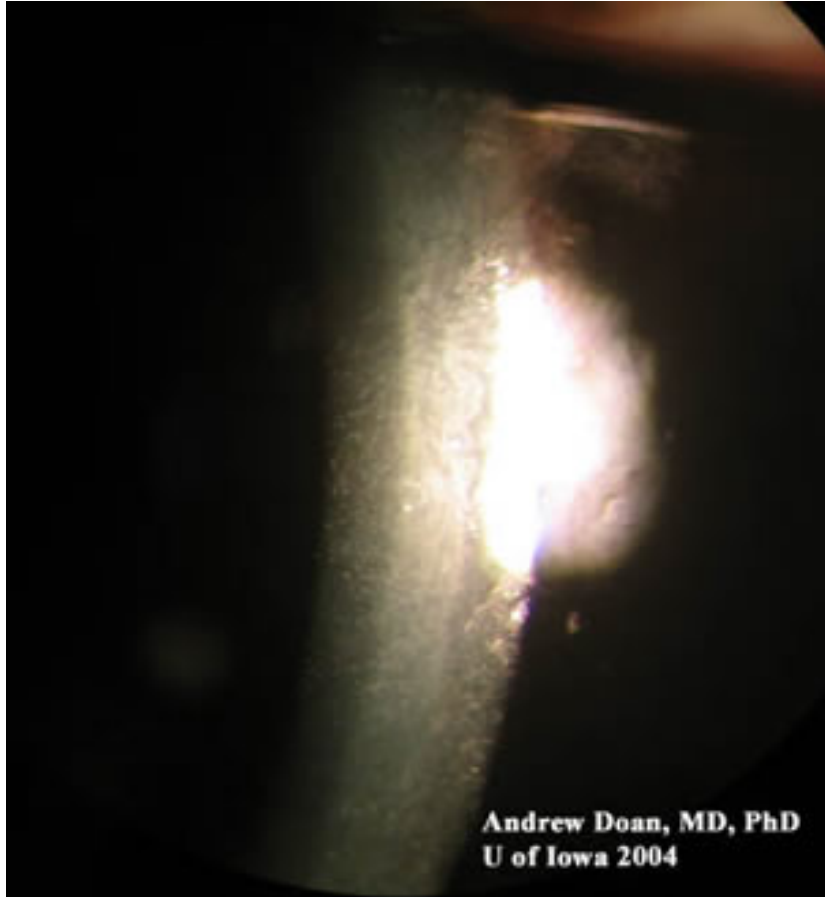
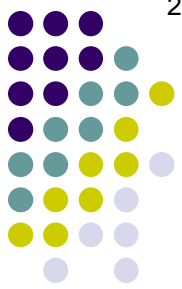
# Q/A

- Identify two conditions in which the term ***beaten bronze*** is used to describe the appearance of an ocular structure:
  - 1) The corneal endothelium in **Fuchs dystrophy**
  - 2) The macula in **Stargardt disease**
- Identify a condition in which the term ***hammered silver*** is used to describe the appearance of an ocular structure:
  - The corneal endothelium in **two words** **abb.** syndrome

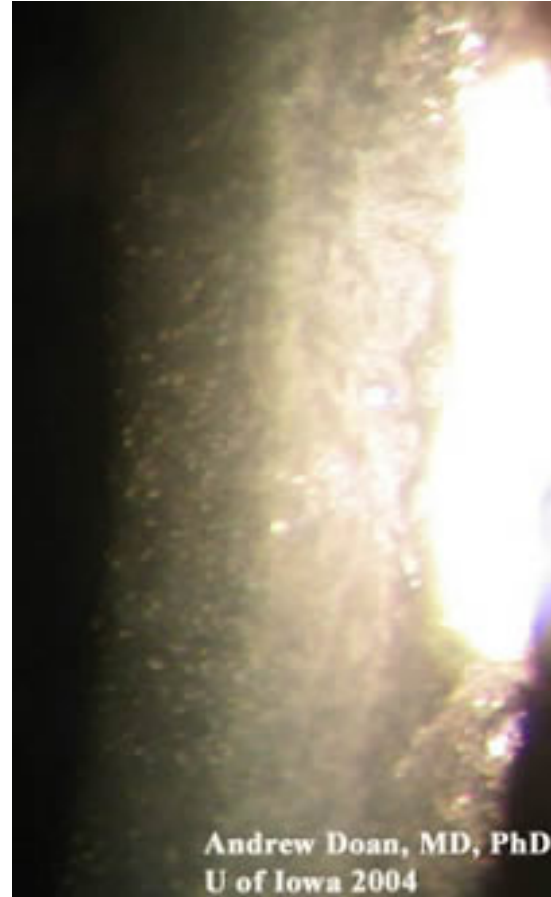


# A

- Identify two conditions in which the term ***beaten bronze*** is used to describe the appearance of an ocular structure:
  - 1) The corneal endothelium in **Fuchs dystrophy**
  - 2) The macula in **Stargardt disease**
- Identify a condition in which the term ***hammered silver*** is used to describe the appearance of an ocular structure:
  - The corneal endothelium in **iridocorneal endothelial (ICE) syndrome**



Low res



High res

ICE: Hammered silver