



American Academy of Ophthalmic Executives®

## Glaucoma ICD-10-CM Quick Reference Guide

<b>H40.00</b> Preglaucoma, unspecified	<b>H40.001</b> Right eye <b>H40.002</b> Left eye <b>H40.003</b> Bilateral	Excludes1 Absolute glaucoma <b>H44.51-</b> Congenital glaucoma <b>Q15.0</b> Traumatic glaucoma due to birth injury <b>P15.3</b>
<b>H40.01</b> Open angle with borderline findings, low risk (1-2 risk factors) <i>Open angle, low risk</i>	<b>H40.011</b> Right eye <b>H40.012</b> Left eye <b>H40.013</b> Bilateral	Excludes1 Absolute glaucoma <b>H44.510-</b> Congenital glaucoma <b>Q15.0</b> Traumatic glaucoma due to birth injury <b>P15.3</b>
<b>H40.02</b> Open angle with borderline findings, high risk (3 or more risk factors) <i>Open angle, high risk</i>	<b>H40.021</b> Right eye <b>H40.022</b> Left eye <b>H40.023</b> Bilateral	Excludes1 Absolute glaucoma <b>H44.510-</b> Congenital glaucoma <b>Q15.0</b> Traumatic glaucoma due to birth injury <b>P15.3</b>
<b>H40.03</b> Anatomical narrow angle <i>Primary angle closure suspect</i>	<b>H40.031</b> Right eye <b>H40.032</b> Left eye <b>H40.033</b> Bilateral	Excludes1 Absolute glaucoma <b>H44.510-</b> Congenital glaucoma <b>Q15.0</b> Traumatic glaucoma due to birth injury <b>P15.3</b>
<b>H40.04</b> Steroid responder	<b>H40.041</b> Right eye <b>H40.042</b> Left eye <b>H40.043</b> Bilateral	Excludes1 Absolute glaucoma <b>H44.510-</b> Congenital glaucoma <b>Q15.0</b> Traumatic glaucoma due to birth injury <b>P15.3</b>
<b>H40.05</b> Ocular hypertension	<b>H40.051</b> Right eye <b>H40.052</b> Left eye <b>H40.053</b> Bilateral	Excludes1 Absolute glaucoma <b>H44.510-</b> Congenital glaucoma <b>Q15.0</b> Traumatic glaucoma due to birth injury <b>P15.3</b>
<b>H40.06</b> Primary angle closure without glaucoma damage (PAS or high IOP with no optic nerve or VF loss)	<b>H40.061</b> Right eye <b>H40.062</b> Left eye <b>H40.063</b> Bilateral	Excludes1 Absolute glaucoma <b>H44.510-</b> Congenital glaucoma <b>Q15.0</b> Traumatic glaucoma due to birth injury <b>P15.3</b>
<b>Staging Codes</b> <b>Note: If code includes eye indicator, then Stage each eye. If both eyes have the same stage, select the bilateral code and indicate the stage as the 7th character.</b> <b>If no eye indicator, code for the Stage of the most severely affected eye. See page 4 for stage criteria.</b>		<b>0</b> -Stage unspecified <b>1</b> -Mild stage <b>2</b> -Moderate stage <b>3</b> -Severe stage <b>4</b> -Indeterminate stage
<b>H40.10</b> Unspecified open-angle glaucoma	No eye indicators Example: <b>H40.10X2</b> = Moderate stage in most severely affected eye.	Excludes1 applies as above. Requires X as a placeholder in 6th position _Add staging codes in 7th position (Stage for most severely affected eye)
<b>H40.11</b> Primary open-angle glaucoma <i>Chronic simple glaucoma</i>	<b>H40.111_</b> Right eye <b>H40.112_</b> Left eye <b>H40.113_</b> Bilateral	Excludes1 applies as above. _Add staging codes in 7th position
<b>H40.12</b> Low-tension glaucoma	<b>H40.121_</b> Right eye <b>H40.122_</b> Left eye <b>H40.123_</b> Bilateral	Excludes1 applies as above. _Add staging codes in 7th position
<b>H40.13</b> Pigmentary glaucoma	<b>H40.131_</b> Right eye <b>H40.132_</b> Left eye <b>H40.133_</b> Bilateral	Excludes1 applies as above. _Add staging codes in 7th position
<b>H40.14</b> Capsular glaucoma with pseudo-exfoliation of lens	<b>H40.141_</b> Right eye <b>H40.142_</b> Left eye <b>H40.143_</b> Bilateral	Excludes1 applies as above. _Add staging codes in 7th position
<b>H40.15</b> Residual stage of open-angle glaucoma	<b>H40.151</b> Right eye <b>H40.152</b> Left eye <b>H40.153</b> Bilateral	Excludes1 applies as above. Staging codes <b>not</b> indicated
<b>H40.20</b> Unspecified primary angle-closure glaucoma	No eye indicators Example: <b>H40.20X1</b> = Mild stage in most severely affected eye.	Excludes1 as above plus: Aqueous misdirection <b>H40.83-</b> Malignant glaucoma <b>H40.83-</b> Requires X as a placeholder in 6th position _Add staging codes in 7th position (stage most severely affected eye)

Effective Oct. 1, 2020



<b>H40.21</b> Acute angle-closure glaucoma attack <i>Acute angle-closure glaucoma crisis</i>	<b>H40.211</b> Right eye <b>H40.212</b> Left eye <b>H40.213</b> Bilateral	Excludes1 as above plus: Aqueous misdirection <b>H40.83-</b> Malignant glaucoma <b>H40.83-</b> Staging codes <b>not</b> indicated
<b>H40.22</b> Chronic angle-closure glaucoma	<b>H40.221_</b> Right eye <b>H40.222_</b> Left eye <b>H40.223_</b> Bilateral	Excludes1 as above plus: Aqueous misdirection <b>H40.83-</b> Malignant glaucoma <b>H40.83-</b> _Add staging codes in 7th position
<b>H40.23</b> Intermittent angle-closure glaucoma	<b>H40.231</b> Right eye <b>H40.232</b> Left eye <b>H40.233</b> Bilateral	Excludes1 as above plus: Aqueous misdirection <b>H40.83-</b> Malignant glaucoma <b>H40.83-</b> Staging codes <b>not</b> indicated
<b>H40.24</b> Residual stage of angle-closure glaucoma	<b>H40.241</b> Right eye <b>H40.242</b> Left eye <b>H40.243</b> Bilateral	Excludes1 as above plus: Aqueous misdirection <b>H40.83-</b> Malignant glaucoma <b>H40.83-</b> Staging codes <b>not</b> indicated
<b>H40.3</b> Glaucoma secondary to eye trauma	<b>H40.31X_</b> Right eye <b>H40.32X_</b> Left eye <b>H40.33X_</b> Bilateral Example: <b>H40.31X3</b> = right eye, severe stage	Excludes1 for <b>H40</b> Code also underlying condition Requires X as a placeholder in 6th position _Add staging codes in 7th position
<b>H40.4</b> Glaucoma secondary to eye inflammation	<b>H40.41X_</b> Right eye <b>H40.42X_</b> Left eye <b>H40.43X_</b> Bilateral Example: <b>H40.43X2</b> = both eyes, moderate stage	Excludes1 for <b>H40</b> Code also underlying condition Requires X as a placeholder in 6th position _Add staging codes in 7th position
<b>H40.5</b> Glaucoma secondary to other eye disorders <i>Underlying conditions, refer to:</i> <b>H34-</b> Retinal vascular occlusions <b>E10.39</b> Diabetes Type 1 complicated <b>E11.39</b> Diabetes Type 2 complicated <b>H25, 26, 27, 28-</b> Disorders of lens <b>T85.2-</b> Disorders of IOL <b>H59.89</b> Disorders after other ocular sx <b>D31-</b> Neoplasms, benign <b>C69-</b> Neoplasms, malignant	<b>H40.51X_</b> Right eye <b>H40.52X_</b> Left eye <b>H40.53X_</b> Bilateral	Excludes1 for <b>H40</b> Code also underlying eye disorder Requires X as a placeholder in 6th position _Add staging codes in 7th position
<b>H40.6</b> Glaucoma secondary to drugs <i>Additional codes for drugs:</i> <b>T49.5x5(ADS)</b> Topical steroids <b>T38.0x5(ADS)</b> Systemic steroids <b>T43.3x5(ADS)</b> Psychotropic drugs	<b>H40.61X_</b> Right eye <b>H40.62X_</b> Left eye <b>H40.63X_</b> Bilateral	Excludes1 for <b>H40</b> Use additional code for adverse effect, if applicable, to identify drug ( <b>T36-T50</b> ) Requires X as a placeholder in 6th position _Add staging codes in 7th position
<b>H40.81</b> Glaucoma with increased episcleral venous pressure	<b>H40.811</b> Right eye <b>H40.812</b> Left eye <b>H40.813</b> Bilateral	Excludes1 for <b>H40</b> Staging codes <b>not</b> required
<b>H40.82</b> Hypersecretion glaucoma	<b>H40.821</b> Right eye <b>H40.822</b> Left eye <b>H40.823</b> Bilateral	Excludes1 for <b>H40</b> Staging codes <b>not</b> required
<b>H40.83</b> Aqueous misdirection <i>Malignant glaucoma</i>	<b>H40.831</b> Right eye <b>H40.832</b> Left eye <b>H40.833</b> Bilateral	Excludes1 for <b>H40</b> Staging codes <b>not</b> required
<b>H42</b> Glaucoma in diseases classified elsewhere	No eye indicators	Code first underlying condition: Amyloidosis <b>E85.-</b> Aniridia <b>Q13.1</b> Lowe's syndrome <b>E72.03</b> Reiger's anomaly <b>Q13.81</b> Specified metabolic disorder <b>E70-E88</b> Excludes1 Glaucoma in: Diabetes mellitus <b>E08.39, E09.39, E10.39, E11.39, E13.39</b> Onchocerciasis <b>B73.02</b> Syphilis <b>A52.71</b> Tuberculous <b>A18.59</b>



<b>H21.82</b> Plateau iris syndrome (post-iridectomy) (postprocedural)	No eye indicators	Staging codes <b>not</b> required
<b>Q15.0</b> Congenital glaucoma <i>Axenfeld's anomaly</i> <i>Buphthalmos</i> <i>Glaucoma of childhood</i> <i>Glaucoma of newborn</i> <i>Hydrophthalmos</i> <i>Keratoglobus, congenital, with glaucoma</i> <i>Macrocornea with glaucoma</i> <i>Macrophthalmos in congenital glaucoma</i> <i>Megalocornea with glaucoma</i>	No eye indicators	Excludes1 Congenital nystagmus ( <b>H55.1</b> ) Ocular albinism ( <b>E70.31-</b> ) Optic nerve hypoplasia ( <b>H47.03-</b> ) Retinitis pigmentosa ( <b>H35.52</b> )
<b>H44.51</b> Absolute glaucoma	<b>H44.511</b> Right eye <b>H44.512</b> Left eye <b>H44.513</b> Bilateral	
<b>T81.31</b> Disruption of external operations (surgical) wound, not elsewhere classified <i>Dehiscence of operation wound NOS</i>	No eye indicators <b>T81.31X (ADS)</b>	Use additional code to identify specified condition resulting from the complication.  In 7th digit use alpha character, one time only for each: <b>A</b> (initial encounter) <b>D</b> (subsequent encounter) <b>S</b> (sequela)
<b>T81.83</b> Persistent postprocedural fistula	No eye indicators <b>T81.83X (ADS)</b>	In 7th digit use alpha character, one time only for each: <b>A</b> (initial encounter) <b>D</b> (subsequent encounter) <b>S</b> (sequela)
<b>H59.4</b> Inflammation (infection) of postprocedural blebitis <i>Post procedural blebitis</i>	No eye indicators <b>H59.41</b> Stage 1 (blebitis only) <b>H59.42</b> Stage 2 (blebitis + anterior chamber reaction) <b>H59.43</b> Stage 3 (blebitis associated endophthalmitis)	
<b>H44.42</b> Hypotony of eye due to ocular fistula	<b>H44.421</b> Right eye <b>H44.422</b> Left eye <b>H44.423</b> Bilateral	
<b>H44.41</b> Flat anterior chamber hypotony of eye	<b>H44.411</b> Right eye <b>H44.412</b> Left eye <b>H44.413</b> Bilateral	
<b>T85.39</b> Other mechanical complication of other ocular prosthetic devices, implants, and grafts	<b>T85.390</b> Right orbit <b>T85.391</b> Left orbit <b>T85.398</b> Other complication	In 7th digit use alpha character, one time only for each: <b>A</b> (initial encounter) <b>D</b> (subsequent encounter) <b>S</b> (sequela)
<b>T49.5X5</b> Adverse effect of ophthalmological drugs and preparations	<b>T49.5X5 (ADS)</b>	In 7th digit use alpha character, one time only for each: <b>A</b> (initial encounter) <b>D</b> (subsequent encounter) <b>S</b> (sequela)
<b>H10.01</b> Acute follicular conjunctivitis	<b>H10.011</b> Right eye <b>H10.012</b> Left eye <b>H10.013</b> Bilateral	
<b>T50.2X5</b> Adverse effect of carbonic anhydrase inhibitors	<b>T50.2X5 (ADS)</b>	In 7th digit use alpha character, one time only for each: <b>A</b> (initial encounter) <b>D</b> (subsequent encounter) <b>S</b> (sequela)
<b>T49.5X6</b> Adverse effect of . . . Underdosing of ophthalmological drugs and preparations	<b>T49.5X6 (ADS)</b>	In 7th digit use alpha character, one time only for each: <b>A</b> (initial encounter) <b>D</b> (subsequent encounter) <b>S</b> (sequela)

Effective Oct. 1, 2020

Disclaimer and Limitation of Liability: All information provided by the American Academy of Ophthalmology, its employees, agents, or representatives participating in the Academy's coding service is as current and reliable as reasonably possible. The Academy does not provide legal or accounting services or advice. You should seek legal and/or accounting advice if appropriate to your situation. Coding is a complicated process involving continually changing rules and the application of judgment to factual situations. The Academy does not guarantee or warrant that either public or private payers will agree with the Academy's information or recommendations. The Academy shall not be liable to you or any other party to any extent whatsoever for errors in, or omissions from any such information provided by the Academy, its employees, agents, or representatives. The Academy's sole liability for any claim connected to its provision of coding information or services shall be limited to the amount paid by you by to the Academy for the information or coding service.

© 2021 American Glaucoma Society and American Academy of Ophthalmology

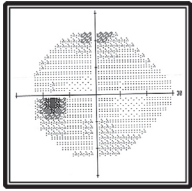
All rights reserved. No part of this publication may be reproduced, stored in a retrieval system or transmitted in any form or by any means, electronic, mechanical, photocopying, recording or otherwise, without prior written permission from the publisher.

# Glaucoma Stage Definitions

## Mild or Early Stage Glaucoma

### ICD-10 7th digit "1"

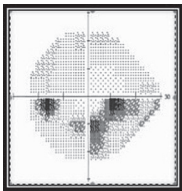
- Optic nerve abnormalities consistent with glaucoma
- but NO visual field abnormalities on any visual field test
- OR abnormalities present only on short-wavelength automated perimetry or frequency doubling perimetry



## Moderate Stage Glaucoma

### ICD-10 7th digit "2"

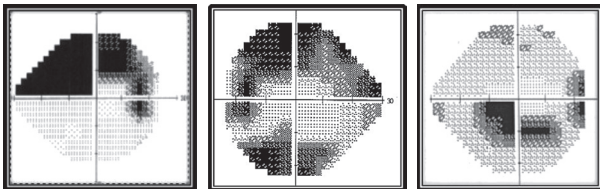
- Optic nerve abnormalities consistent with glaucoma
- AND glaucomatous visual field abnormalities in ONE hemifield and
- NOT within 5 degrees of fixation (note: 5 degrees = involvement of spots nearest fixation)



## Advanced, Late, Severe Stage

### ICD-10 7th digit "3"

- Optic nerve abnormalities consistent with glaucoma
- AND glaucomatous visual field abnormalities in BOTH hemifields
- AND/OR loss within 5 degrees of fixation in at least one hemifield



## Indeterminate Stage

### ICD-10 7th digit "4"

- Visual fields not performed yet
- Patient incapable of visual field testing
- Unreliable/uninterpretable visual field testing

## Unspecified

### ICD-10 7th digit "0"

- Stage not recorded in chart
- Remember to document stage in record!

## ICD-10

For ICD-10, not all glaucoma diagnoses require the use of Staging at the 7th digit.

These are the Codes in ICD-10 that **do not have a laterality digit: Code the Stage for the most severely affected eye, if required in the 7th digit.**

1. Unspecified open-angle glaucoma **H40.10-** (Requires Stage digit for most severely affected eye)
2. Unspecified primary angle-closure glaucoma **H40.20-** (Requires Stage digit for most severely affected eye)
3. Other specified glaucoma **H40.89** (Stage is not used)
4. Unspecified glaucoma **H40.9** (Stage is not used)

## Risk Factors for OAG Suspect Codes

- African American or Hispanic race
- Family history of glaucoma in 1st degree relative
- Thin central corneal thickness
- High IOP
- Pseudoexfoliation or pigment dispersion syndrome

≥ 3 risk factors = high risk  
≤ 2 risk factors = low risk