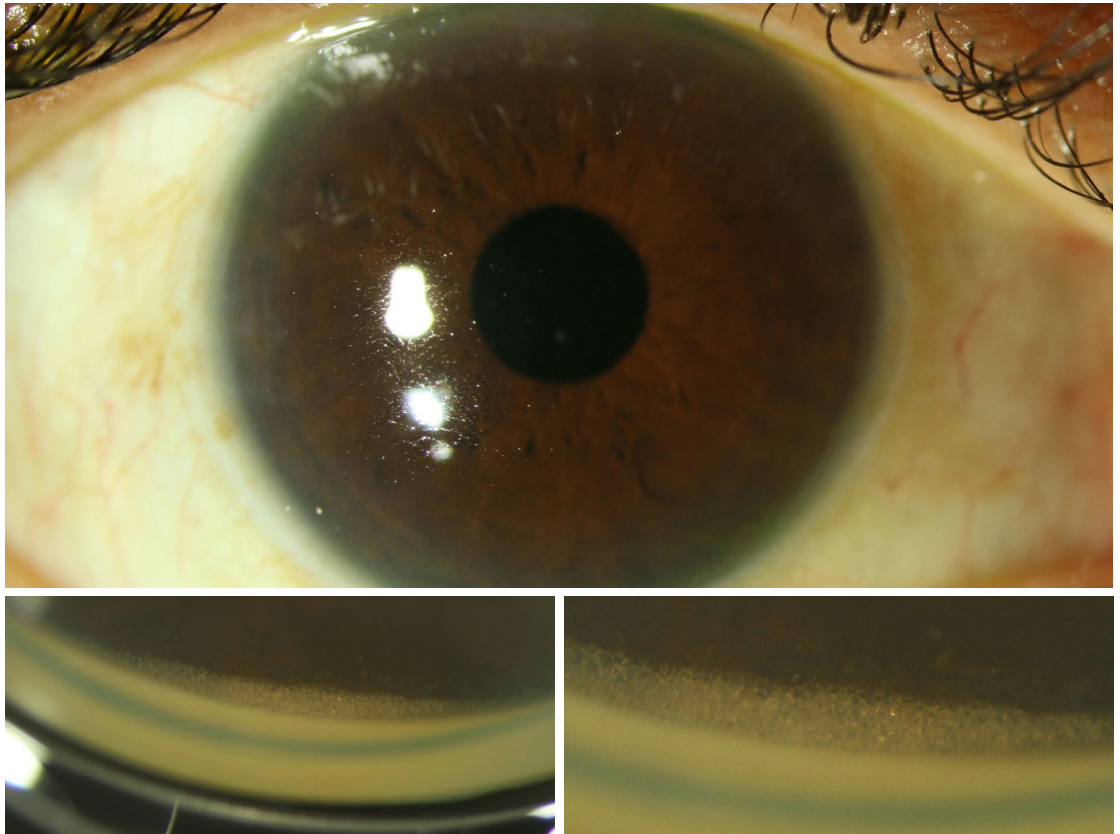


MYSTERY IMAGE
BLINK



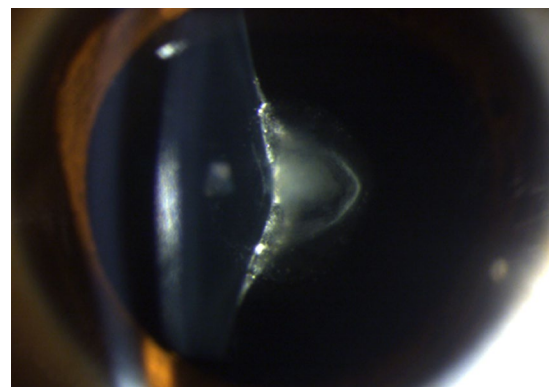
WHAT IS THIS MONTH'S MYSTERY CONDITION? Visit aao.org/eyenet to make your diagnosis in the comments.

LAST MONTH'S BLINK

Posterior Lenticonus: “Fishtail” Appearance

A 17-year-old boy presented with complaints of blurred vision in his left eye. Best-corrected visual acuity (BCVA) was 20/20 in the right eye and 20/60 in the left. In both eyes, the slit-lamp exam revealed a conical protrusion of the posterior surface of crystalline lens associated with cataractous changes, giving a “fishtail” appearance (photo); these changes were more prominent in left eye. Scheimpflug imaging confirmed the finding of posterior lenticonus in both eyes. Phacoemulsification was performed, followed by implantation of a posterior chamber IOL in his left eye; his post-op BCVA was 20/20.

Posterior lenticonus is a cone-shaped protrusion of the crystalline lens into the vitreous cavity.¹ It can be part of an inherited syndrome, such as Alport or Lowe syndrome, or it can be sporadic, as in this case. There is a genetic defect in the synthesis of type IV collagen,² which can cause fragility in the basement membrane of the lens capsule.



- 1 Lee BJ et al. *J Cataract Refract Surg.* 2014;40(2):217-223.
- 2 Savige J et al. *Clin J Am Soc Nephrol.* 2015;10(4):703-709.

WRITTEN BY **JITENDER JINAGAL, MS, GAURAV GUPTA, MS, AND JAGAT RAM, MS**, ADVANCED EYE CENTRE, POSTGRADUATE INSTITUTE OF MEDICAL EDUCATION AND RESEARCH, CHANDIGARH, INDIA.
PHOTO BY **JITENDER JINAGAL, MS.**