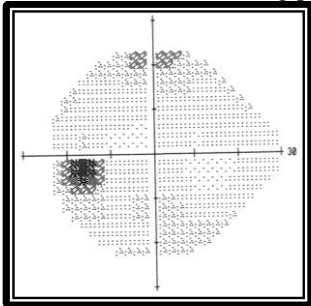


Glaucoma Stage Definitions:

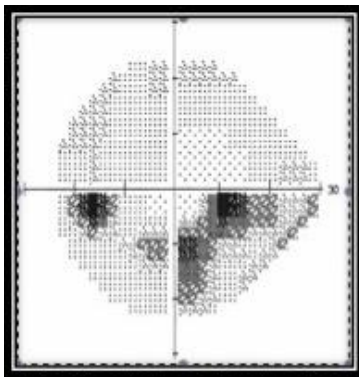
Mild or Early stage Glaucoma ICD9 365.71; ICD 10 7th digit "1"

- Optic Nerve abnormalities consistent with glaucoma
- but NO visual field abnormalities on any visual field test
- OR abnormalities present only on short-wavelength automated perimetry or frequency doubling perimetry



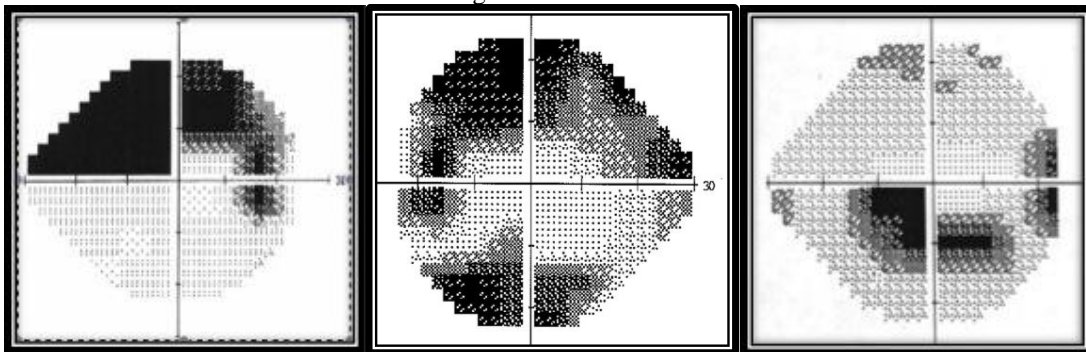
Moderate Stage Glaucoma ICD9 365.72 ; ICD 10 7th digit "2"

- Optic nerve abnormalities consistent with glaucoma
- AND glaucomatous visual field abnormalities in ONE hemifield and
- NOT within 5 degrees of fixation (note: 5 degrees = involvement of spots nearest fixation)



Advanced, Late, Severe Stage ICD9 365.73 ; ICD 10 7th digit "3"

- Optic nerve abnormalities consistent with glaucoma
- AND glaucomatous visual field abnormalities in BOTH hemifields
- AND/OR loss within 5 degrees of fixation in at least one hemifield.



Indeterminate Stage ICD9 365.74 ; ICD10 7th digit "4"

- visual fields not performed yet,
- patient incapable of visual field testing,
- unreliable/uninterpretable visual field testing

Unspecified: ICD9 365.70 ; ICD 10 7th digit "0"

- Stage not recorded in chart
- Remember to document stage in record!

For Billing purposes in ICD9:

-Code the type of Glaucoma first.

-Code only one Staging Code to reflect the **most severely affected eye**.

-Staging Codes for Billing are only required as **add-on codes** to the most common types of glaucoma listed here:

- 365.10 Open-angle, unspecified
- 365.11 Primary OAG
- 365.12 Low-tension glaucoma , normal tension
- 365.13 Pigmentary glaucoma
- 365.20 Primary angle closure glaucoma, unspecified
- 365.23 Chronic or Primary Angle closure glaucoma
- 365.31 Steroid induced glaucoma
- 365.52 Pseudoexfoliation glaucoma
- 365.62 Glaucoma assoc w/ inflammation
- 365.63 Glaucoma assoc w/ vascular d/o
- 365.65 Glaucoma assoc w/ trauma

ICD10

For ICD10, not all glaucoma diagnoses require the use of Staging at the 7th digit.

For ICD10, in 2014 some glaucoma codes do not have a laterality digit.

These are the Codes in 2014 ICD10 that **do NOT have a laterality digit: Code the Stage for the most severely affected eye, if required in the 7th digit**

1. Primary open-angle glaucoma H40.11- (requires Stage digit)
2. Unspecified open-angle glaucoma H40.10- (requires Stage digit)
3. Unspecified primary angle-closure glaucoma H40.20- (Requires Stage digit)
4. Other specified glaucoma H40.89 (Stage is not used)
5. Unspecified glaucoma H40.9 (Stage is not used)